

**LTAI/AYT**  
**ANTALYA INTL**

**JEPPESEN**  
9 MAY 25 (10-2M) Eff 15 May

## ANTALYA, TURKIYE

**STAR**

D-ATIS Arrival  
118.275

Apt Elev  
177

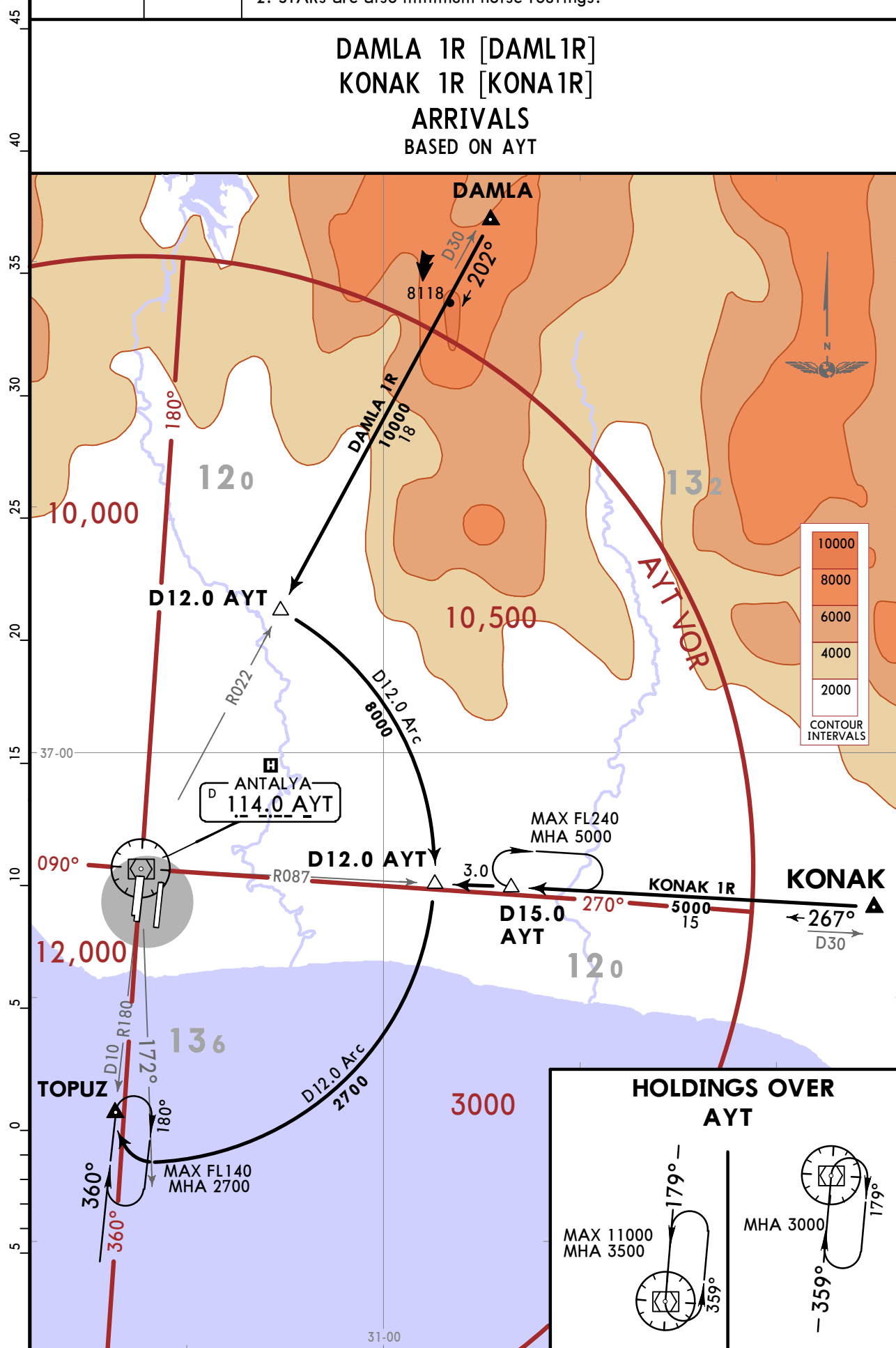
Alt Set: hPa  
Trans level: By ATC  
1. ATC may clear the aircraft direct to a waypoint published in a STAR.  
After reaching this waypoint, follow remaining part of STAR.  
2. STARs are also minimum noise routings.

**DAMLA 1R [DAML1R]**

KONAK 1R [KONA 1R]

## ARRIVALS

BASED ON AYT



CHANGES: Bearings.

© JEPPESEN, 2017, 2025. ALL RIGHTS RESERVED.

LTAI/AYT  
ANTALYA INTL

**JEPPESSEN**  
3 FEB 23 **10-2S**

**ANTALYA, TURKIYE**

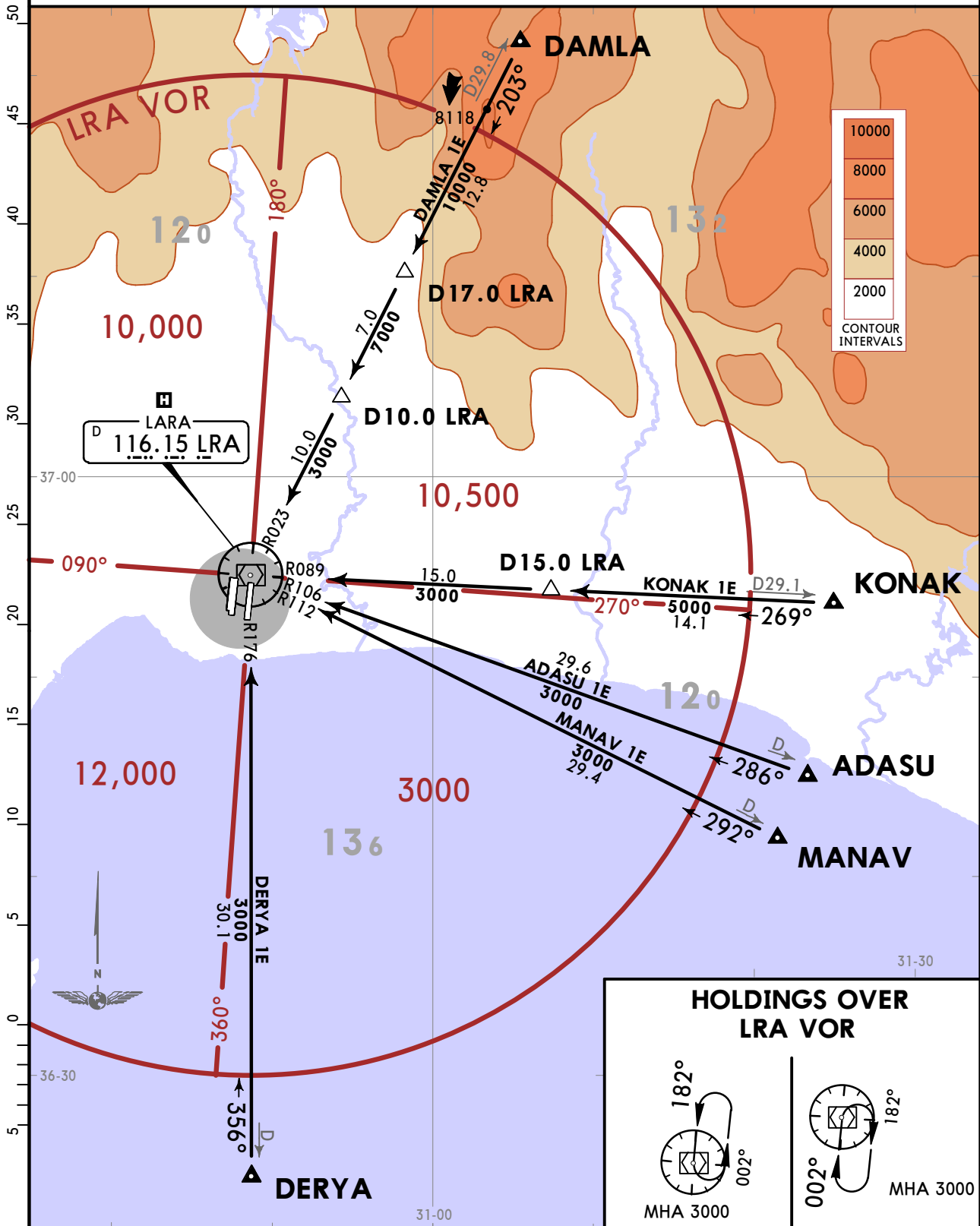
**STAR**

D-ATIS Arrival  
**118.275**

Apt Elev  
**177**

Alt Set: hPa  
Trans level: By ATC  
1. ATC may clear the aircraft direct to a waypoint published in a STAR.  
After reaching this waypoint, follow remaining part of STAR.  
2. STARs are also minimum noise routings.

**ADASU 1E [ADAS1E], DAMLA 1E [DAML1E]  
DERYA 1E [DERY1E], KONAK 1E [KONA1E]  
MANAV 1E [MANA1E]  
ARRIVALS  
(RWYS 18L, 36R)  
BASED ON LRA VOR**



CHANGES: Country name.

© JEPPESSEN, 2017, 2023. ALL RIGHTS RESERVED.